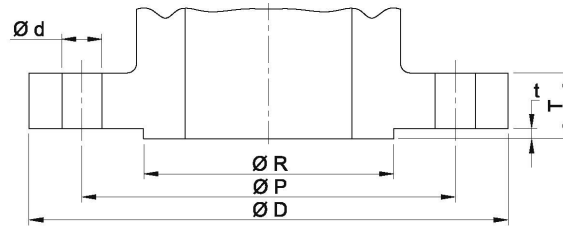


FLANGE DIMENSION DIN : ANSI



ANSI 16.5 and ANSI 16.47 (A)ISO DIN 2631 - 2638 WN Flanges 150 LBS							
Nom.OD (FNCK)	Ø D [mm]	Ø R [mm]	Ø P [mm]	T [mm]	t [mm]	Ø d [mm]	No.bolts
0.5	88.9	34.9	60.3	11.1	1.6	15.9	4
0.75	98.4	42.9	69.8	12.7	1.6	15.9	4
1	107.9	50.8	79.4	14.3	1.6	15.9	4
1.25	117.5	63.5	88.9	15.9	1.6	15.9	4
1.5	127	73	98.4	17.5	1.6	15.9	4
2	152.4	92.1	120.6	19.1	1.6	19	4
3	190.5	127	152.4	23.8	1.6	19	4
4	228.6	157.2	190.5	23.8	1.6	19	8
6	279.4	215.9	241.3	25.4	1.6	22.2	8
10	406.4	323.8	361.9	30.2	1.6	25.4	12
14	533.4	412.7	476.2	34.9	1.6	28.6	12

ANSI 16.5 and ANSI 16.47 (A)ISO DIN 2631 - 2638 WN Flanges 300 LBS							
	[mm]	[mm]	[mm]	[mm]	[mm]	[mm]	
0.75	117.5	42.9	82.5	15.9	1.6	19	4
1.25	133.4	63.5	98.4	19	1.6	19	4
2	165.1	92.1	127	22.2	1.6	19	8
3	209.6	127	168.3	28.6	1.6	22.2	8
4	254	157.2	200	31.8	1.6	22.2	8
6	317.5	215.9	269.9	36.5	1.6	22.2	12
10	444.5	323.8	387.3	47.6	1.6	28.6	16
14	584.2	412.7	514.3	54	1.6	31.7	20

ANSI 16.5 and ANSI 16.47 (A)ISO DIN 2631 - 2638 WN Flanges 600 LBS							
Nom.OD	Ø D	Ø R	Ø P	T	t	Ø d	No.bolts
0.5	95.2	34.9	66.7	20.6	6.3	15.9	4
1	123.8	50.8	88.9	23.8	6.3	19	4
1.5	155.6	73	114.3	28.5	6.3	22.2	4
2.5	190.5	104.8	149.2	34.9	6.3	22.2	8
3.5	228.6	139.7	184.1	41.2	6.3	25.4	8
5	330.2	185.7	266.7	50.7	6.3	28.6	8
8	419.1	269.9	349.2	61.9	6.3	31.7	12
12	558.8	381	488.9	73	6.3	34.9	20
16	685.8	469.9	603.2	82.5	6.3	41.3	20

ANSI 16.5 and ANSI 16.47 (A)ISO DIN 2631 - 2638 WN Flanges 900 LBS							
	[mm]	[mm]	[mm]	[mm]	[mm]	[mm]	
0.75	130.2	42.9	88.9	31.7	6.3	22.2	4
1.25	158.8	63.5	111.1	34.9	6.3	25.4	4
2	215.9	92.1	165.1	44.4	6.3	25.4	8
3	241.3	127	190.5	44.4	6.3	25.4	8
5	349.2	185.7	279.4	57.1	6.3	34.9	8
8	469.9	269.9	393.7	69.8	6.3	38.1	12
12	609.6	381	533.4	85.7	6.3	38.1	20
16	704.8	469.9	615.9	95.2	6.3	44.4	20